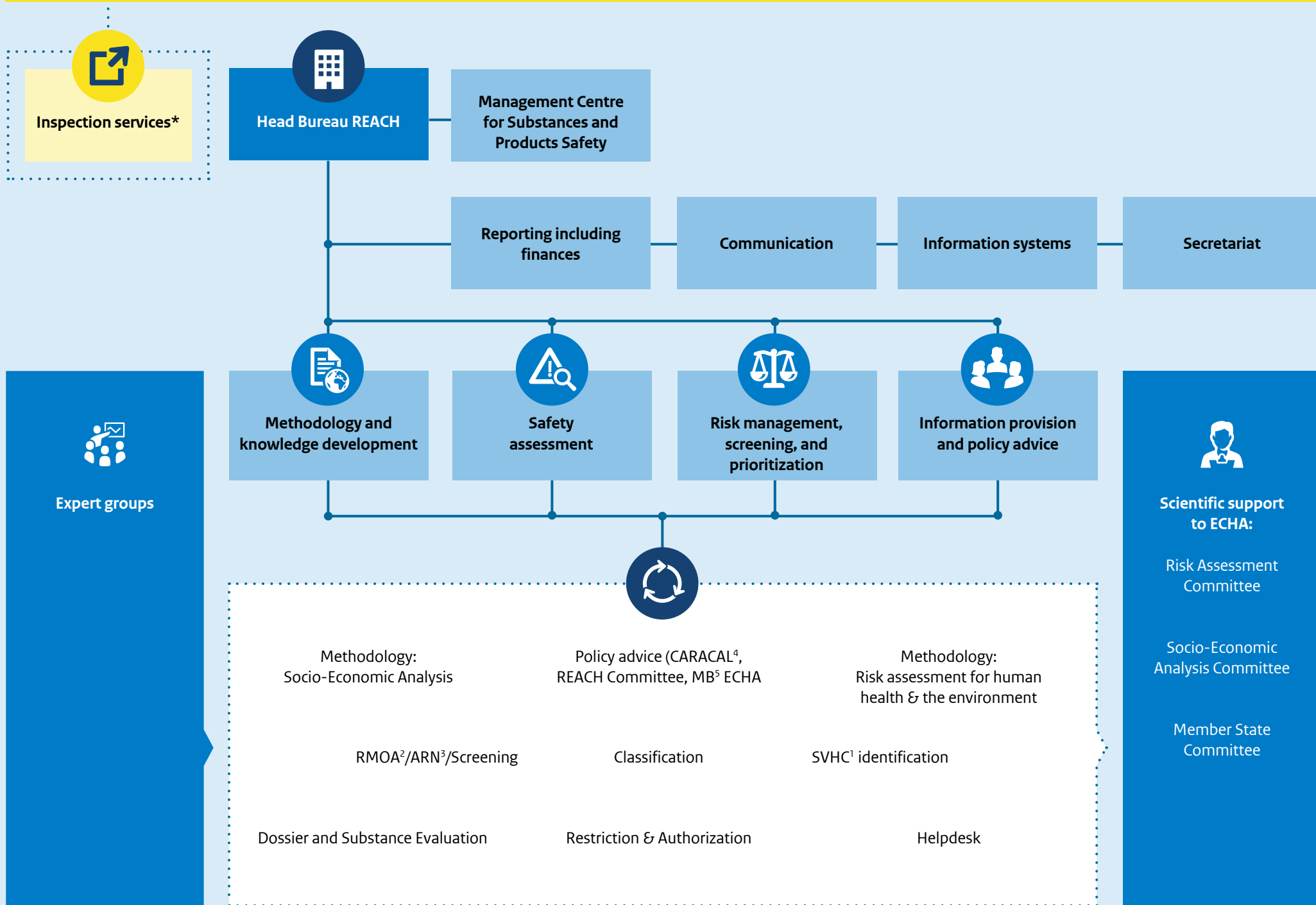




**Clients\*:**

Ministry of Infrastructure and Water Management, Ministry of Health, Welfare and Sport, Ministry of Social Affairs and Employment



**Legend:**

<sup>1</sup> Substance of Very High Concern

<sup>2</sup> Regulatory Management Option Analysis

<sup>3</sup> Assessment of Regulatory Needs (= screening substance groups)

<sup>4</sup> Competent Authorities for REACH and CLP expert group

<sup>5</sup> Management Board ECHA

\* External inspection services